

PRESENTATION ON THE DRAFT INTEGRATED WASTE MANAGEMENT PLAN (IWMP)

SEPTEMBER 2021



BUFFALO CITY
METROPOLITAN MUNICIPALITY

BUFFALO CITY METROPOLITAN MUNICIPALITY

Unity in Action. A City Hard at Work



TABLE OF CONTENTS

- ✓ Introduction
- ✓ Legislative Framework
- ✓ Primary Focus of the National Environmental Management Waste Act
- ✓ Definition of the Geographical Area
- ✓ Situation Analysis
- ✓ Desired end state (Goals)
- ✓ Communication and Stakeholder Participation
- ✓ Implementation Instruments
- ✓ Report on Implementation Monitoring and Review
- ✓ Conclusion



INTRODUCTION



BUFFALO CITY METROPOLITAN MUNICIPALITY

Unity in Action. A City Hard at Work



INTRODUCTION

- The introduction focuses on the historical overview and the current state of affairs which has led the country into influencing the Metros, District Municipalities and LM's in developing the IWMP's.
- The BCMM IWMP seeks to address the waste management fragmentation and thus close the existing gaps and poor waste management practises.



BUFFALOCITY**METROPOLITAN**MUNICIPALITY

Unity in Action. A City Hard at Work



LEGISLATIVE FRAMEWORK

- National Environmental Management Waste Act (Act No. 59 of 2008)
- Section 24 of the South African Constitution
- National Environmental Management Act
- BCMM Integrated Development Plan (IDP)
- BCMM Metro Growth Development Strategy (MGDS)



BUFFALOCITY**METROPOLITAN**MUNICIPALITY

Unity in Action. A City Hard at Work



PRIMARY FOCUS OF THE NATIONAL ENVIRONMENTAL MANAGEMENT WASTE ACT



Reduce what you can. If you can't reduce it then...

Re-use what you can. If you can't re-use it then...

Recycle & compost what you can. What you can't recycle is burned to...

Create energy for electricity. If it can't create electricity, then it is...

Disposed of in landfill. This is the LAST option.



BUFFALO CITY METROPOLITAN MUNICIPALITY

Unity in Action. A City Hard at Work



DEFINITION OF THE GEOGRAPHICAL AREA



BUFFALOCITY**METROPOLITAN**MUNICIPALITY

Unity in Action. A City Hard at Work



DEFINITION OF THE GEOGRAPHICAL AREA

- This chapter is focusing on the Geographical location of BCMM, Population, Topography, Climate and BCMM new wards
- Among others these play a part in influencing the way people choose to reside in the City.
- This therefore affects the manner in which Solid Waste service should be provided as well distribution of resources in order to provide Solid Waste services.



BUFFALO CITY METROPOLITAN MUNICIPALITY

Unity in Action. A City Hard at Work



SITUATION ANALYSIS



BUFFALOCITY**METROPOLITAN**MUNICIPALITY

Unity in Action. A City Hard at Work



SITUATION ANALYSIS

- A situation analysis has been conducted and has considered various factors that have an impact on Waste Generation. These factors have been identified as follows:
 - Growth and Demographic Profile, Dwelling Types
 - Waste Generation Rates, Quantities and Types
 - Waste Characterisation / Analysis
 - Status of Waste Management Facilities in BCMM
 - Status of waste collection (serviced and unserved areas)
 - Financing of Waste Management
 - Revenue Sources
 - Organisational Structure of the Department



SITUATION ANALYSIS Cont....

- In analysing the waste management situation, the priority issues / challenges needing urgent attention were selected and they are:
 - (i) Access to refuse removal services
 - (ii) State of Cleanliness of BCMM
 - (iii) Insufficient levels of waste recycling and diversion
 - (vi) Compliance issues
 - (vii) Waste Management Fleet



SITUATION ANALYSIS IN PICTURES



Edge Road in Beacon Bay



SITUATION ANALYSIS IN PICTURES



Duncan Village



20:15

LTE

mobile.twitter.com

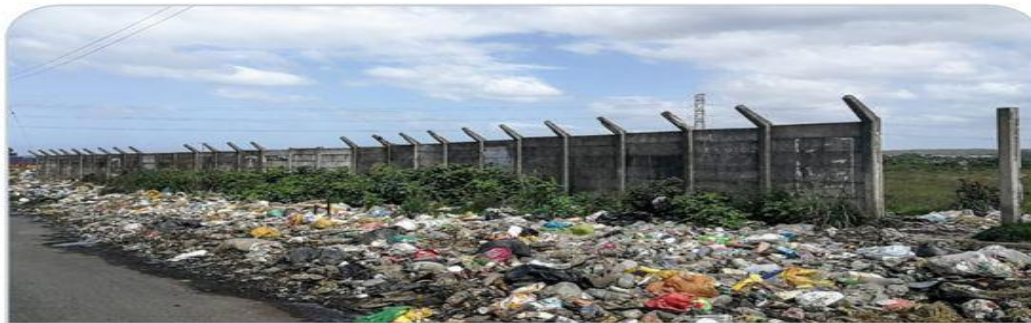


Home



@dispatch_DD @Dispatch... · 12m ...

A dumping site has been created at the entrance to the treatment plant at the bottom of Buffalo Flats — in front of a Buffalo City Metro facility. Not only is it getting worse daily but BCM is doing nothing about it. What if a major problem arises and ...



READER LETTER | Eyesore and hazard at Buffalo Flats facility

dispatchlive.co.za



BUFFALO CITY
METROPOLITAN MUNICIPALITY

BUFFALO CITY METROPOLITAN MUNICIPALITY

Unity in Action. A City Hard at Work





BUFFALO CITY METROPOLITAN MUNICIPALITY

Unity in Action. A City Hard at Work





**Over reliance on plant hire as opposed into using
BCMM plant**



BUFFALO CITY METROPOLITAN MUNICIPALITY

Unity in Action. A City Hard at Work



DESIRED END STATE (GOALS)



BUFFALOCITY**METROPOLITAN**MUNICIPALITY

Unity in Action. A City Hard at Work



Short-Term Goals

- Continuation with installation of street litter bins



Short-Term Goals

- Establish Community Based Cleaning Projects especially in townships and informal settlements
- Strengthen compliance of landfill sites and garden transfer stations
- Focus on waste minimization initiatives (Reduce, Re-use, Recycle, Composting and waste to energy)



BUFFALOCITY**METROPOLITAN**MUNICIPALITY

Unity in Action. A City Hard at Work



Short-Term Goals

- Continue with Blits & Fix service delivery Fridays
- Establishment of the Rapid Response Team for quality assurance
- Upgrade existing drop-off points (to improve their aesthetics)
- Construct mini-garden transfer station to compliment the existing waste management facilities (landfill sites & transfer stations)
- Clustering of areas for efficient and effective services in the formal areas



Short-Term Goals

- Focus on unknown informal settlements for provision of solid waste services
- Adoption of waste management by-laws by Council
- Introduction of the 3 shift system in order to curb overtime expenditure and prevent workforce fatigue
- Constant distribution of refuse bags to households
- Establishment of the BCMM Waste Forum



Medium-Term Goals: Controls

- Designation of waste management peace officers
- Enforcement of waste management by-laws (penalties & fees)
- Strengthen communication and awareness raising strategies in order to change people's mind sets towards waste management
- Strengthen supervision of staff at all levels in order to ensure effective waste management systems and performance



Medium-Term Goals: Controls

- Waste separation at source
- Introduction of the 3 shift system



Long-Term Goals

- Utilization of plant hire when necessary
- Contribution towards BCMM revenue enhancement
- Develop waste to energy programmes
- Review the IWMP and waste by-laws



COMMUNICATION AND STAKEHOLDER PARTICIPATION



BUFFALOCITY**METROPOLITAN**MUNICIPALITY

Unity in Action. A City Hard at Work



COMMUNICATION AND STAKEHOLDER PARTICIPATION

- This chapter outlines a consultative process with all relevant stakeholders.
- Also in this chapter stakeholders that need to partner with the City in the development and implementation of the IWMP will be identified.
- This is to ensure that this IWMP takes into account major challenges of waste management in the city.
- As part of the development of the IWMP the City will publish and communicate the IWMP in order to ensure that all stakeholders are reached and they participate in the development of the Plan.



BUFFALOCITY**METROPOLITAN**MUNICIPALITY

Unity in Action. A City Hard at Work



IMPLEMENTATION INSTRUMENTS



BUFFALO CITY METROPOLITAN MUNICIPALITY

Unity in Action. A City Hard at Work



IMPLEMENTATION INSTRUMENTS

- The necessary implementation instruments for the development and implementation of the IWMP are identified.
- The identified implementation instruments necessary for development and implementation of the IWMP are among others:
 - Partnerships (e.g. Schools, Business etc.)
 - Legal Instruments (e.g. NEMWA etc.)
 - Funding Mechanisms (e.g. USDG etc.)



REPORTING ON IMPLEMENTATION MONITORING AND REVIEW



BUFFALOCITY**METROPOLITAN**MUNICIPALITY

Unity in Action. A City Hard at Work



REPORTING ON IMPLEMENTATION MONITORING AND REVIEW

- The reviewed IWMP as a sector plan and waste management by-laws will later be aligned with the IDP.
- The IWMP will after its adoption by the Council will be submitted to the MEC: Finance, Economic Development and Environmental Affairs for endorsement
- Its implementation and monitoring will be the order of the day



CONCLUSION

The IWMP and waste by-laws if put into practical use, will enable the city to:

- comply with the Polokwane Declaration of 2001 which says “Zero Waste to Landfill Site by 2022”.
- Motivate the ratepayers and community members to pay for solid waste management services without any reservations.



Thank
you

