

## APPENDIX C

### Buffalo City Metropolitan Municipality: Administrative Structure

The Buffalo City Metropolitan Municipality implements its Integrated Development Plan through its administrative structures headed by the Municipal Manager with the following Directorates:

- Municipal Manager's Office
- Directorate: Executive Support Services
- Directorate: Corporate Services
- Directorate: Planning & Economic Development
- Directorate: Engineering Services
- Directorate: Community Services
- Directorate: Health & Public Safety
- Directorate: Financial Services
- Directorate: Chief Operations Officer

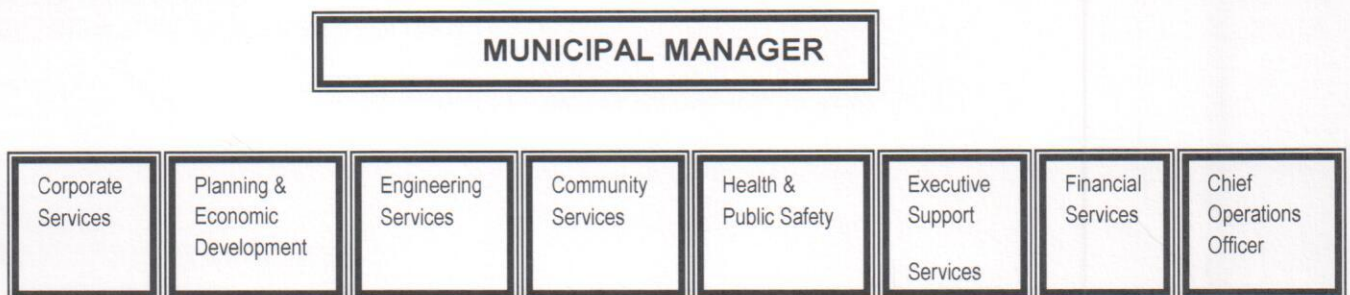


FIGURE 1: BUFFALO CITY METROPOLITAN MUNICIPALITY: ADMINISTRATIVE STRUCTURE

#### 1.1 *Directorate: Executive Support Services*

The Directorate of Executive Support Services consists of the following Departments, namely:

- Public Participation & Special Programmes
- IDP, Budget Integration & Performance Management
- Development Cooperation & Communications
- Executive Support Services
- Knowledge Management & Research
- Office of the Speaker

Figure 2 details organogram the of the Directorate of Executive Support Services up to Management level.

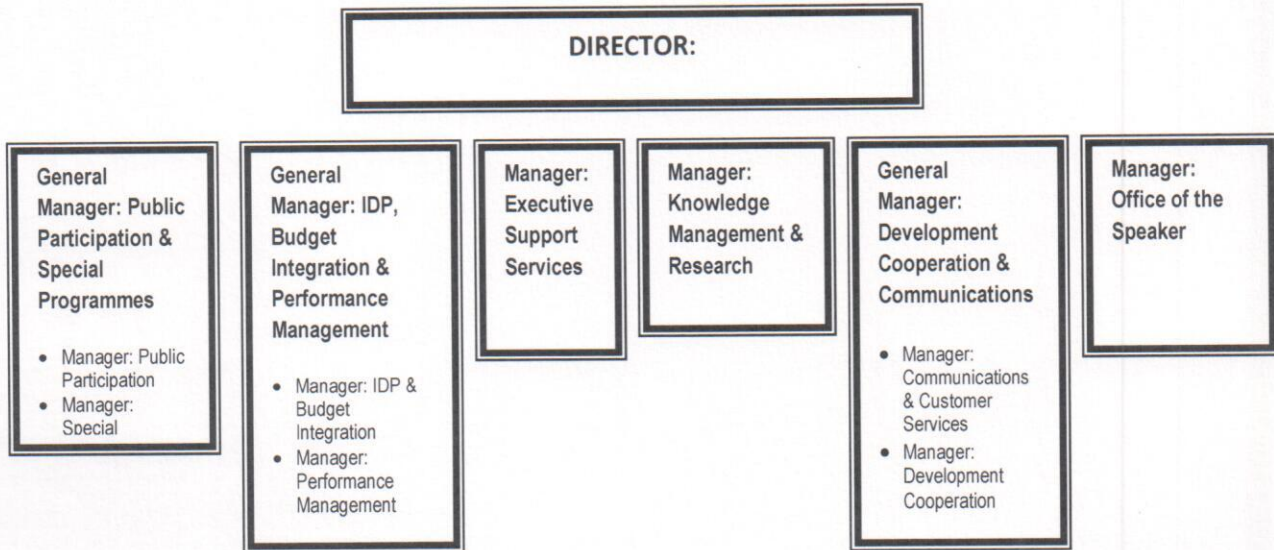


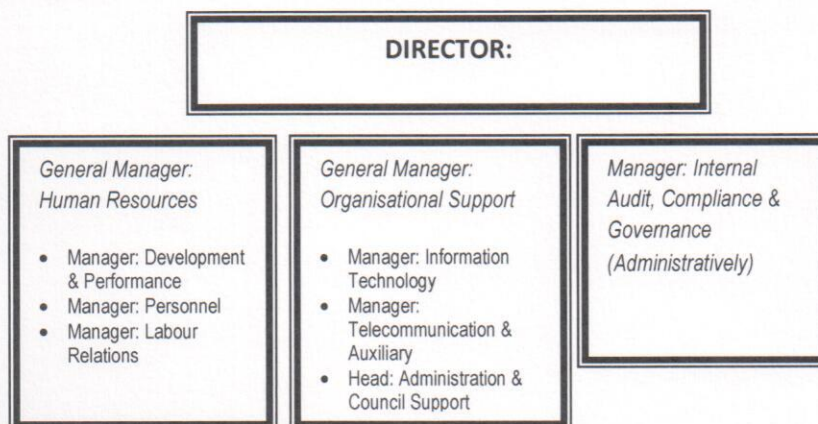
FIGURE 2: EXECUTIVE SUPPORT SERVICES

### 1.2 Directorate: Corporate Services

The Directorate of Corporate Services consists of the following Departments, namely:

- Human Resources
- Organisational Support
- Internal Audit, Compliance & Governance

Figure 3 details the organogram of the Directorate of Corporate Service up to management level.



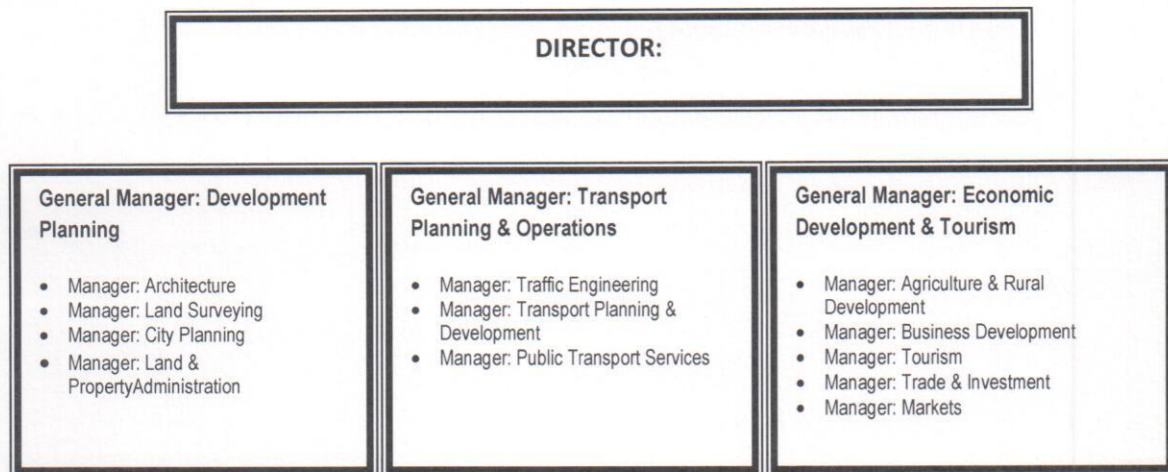
**Figure 3: Corporate Services**

**1.3 Directorate: Planning & Economic Development**

The Directorate of Planning & Economic Development consists of the following Departments, namely:

- Development Planning
- Transport Planning & Operations
- Economic Development & Tourism

Figure 4 details the organogram of the Directorate of Development Planning & Economic Development up to management level.



**FIGURE 4: PLANNING & ECONOMIC DEVELOPMENT**

#### 1.4 Directorate: Engineering Services

The Directorate Engineering Services consists of the following Departments, namely:

- Water & Sanitation
- Construction, Roads & Projects
- Electrical & Mechanical Services

Figure 5 details the organogram of the Directorate of Engineering Services up to management level.

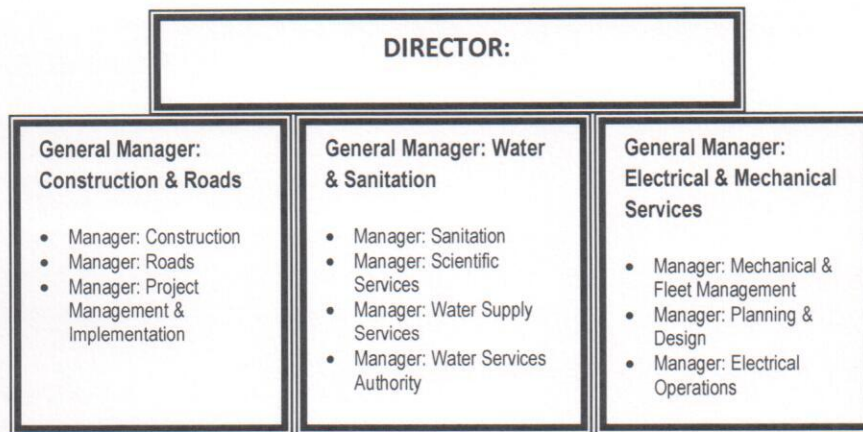


FIGURE 5: ENGINEERING SERVICES

**1.5 Directorate: Community Services**

The Directorate Community Services only has the following Departments, namely:

- Solid Waste Management
- Environmental, Amenities & Arts & Cultural Services
- IEMP & Sustainable Development

Figure 6 details the organogram of the Directorate of Community Services up to management level.

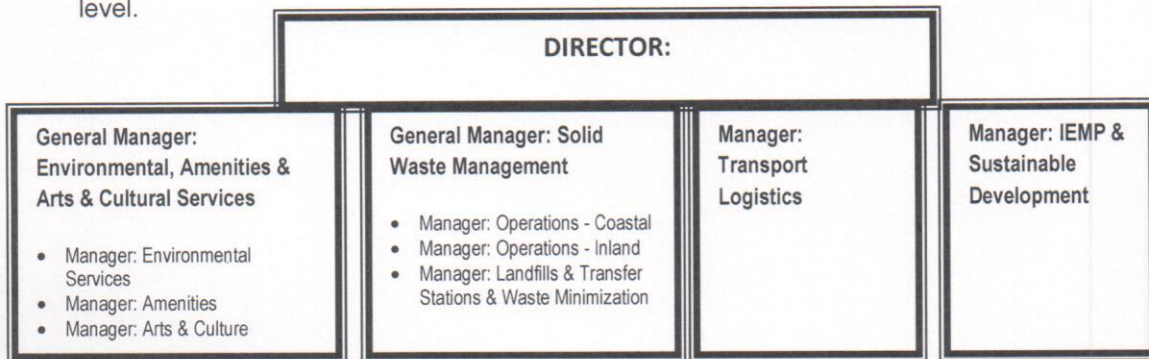


FIGURE 6: COMMUNITY SERVICES

**1.6 Directorate: Health & Public Safety**

The Directorate Health & Public Safety has the following Departments, namely:

- Public Safety
- Health Services

Figure 7 details the organogram of the Directorate of Health & Public Safety up to management level.

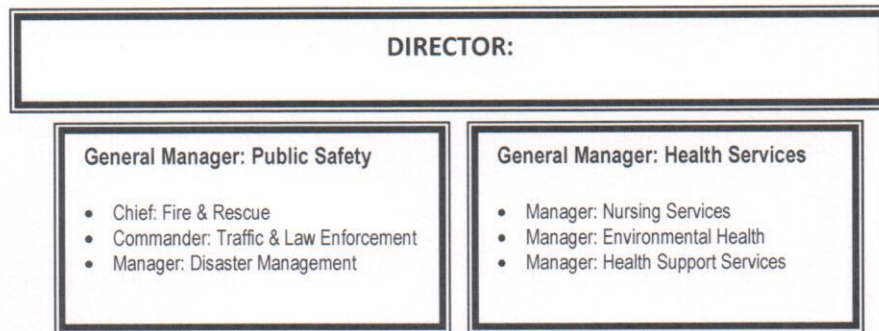


FIGURE 7: HEALTH & PUBLIC SAFETY

**1.7 Directorate: Financial Services**

The Directorate Financial Services consists of the following departments, namely:

- Asset & Risk Management
- Revenue Management
- Budget & Treasury
- Supply Chain Management

Figure 8 details the organogram of the Directorate of Financial Services up to management level.

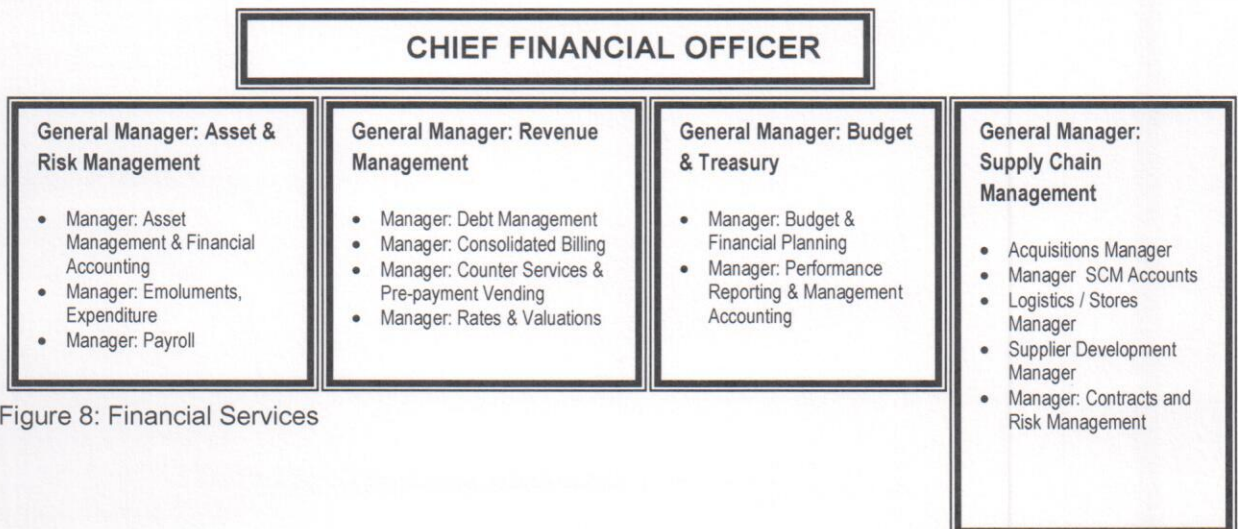


Figure 8: Financial Services

**1.8 Directorate: Office of the Chief Operating Officer**

The Directorate: Office of the Chief Operating Officer consists of the following departments, namely:

- Housing
- Mdantsane Urban Renewal Programme
- Special Projects

Figure 9 details the organogram of the Directorate: Office of the Chief Operating Officer up to management level.

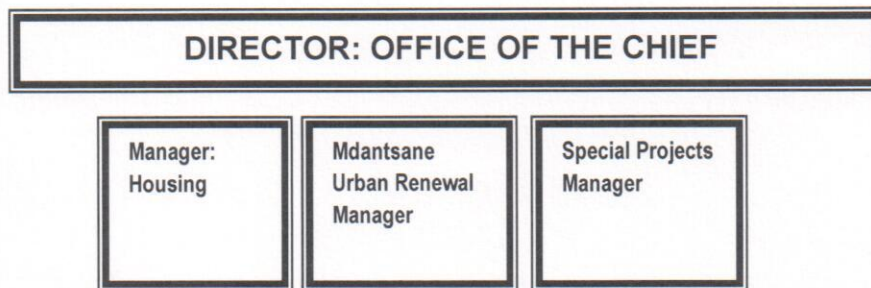


Figure 9: Office of the Chief Operating Officer