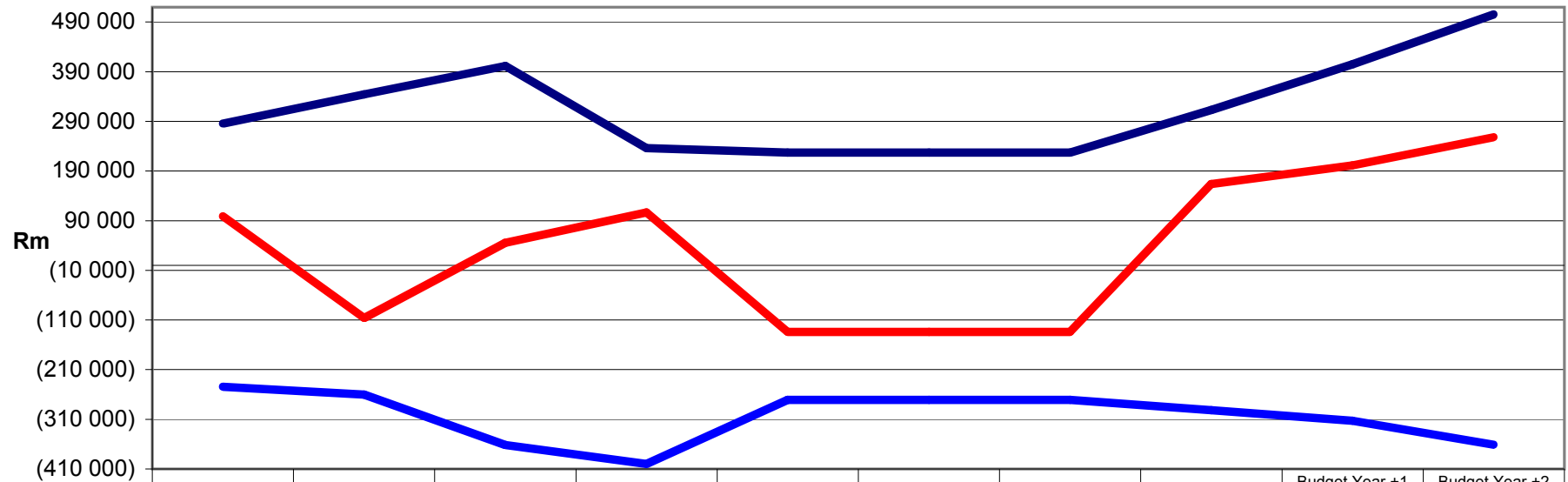


**Cash flow trend**

06/07 AUD 07/08 AUD 08/09 AUD CY 09/10 BUD CY 09/10 ADJ CY 09/10 FCST CY 09/10 ACT Budget Year 10/11 Budget Year +1 11/12 Budget Year +2 12/13

Cash Flow - Op. Activities	285 766	344 500	401 876	236 004	227 470	227 470	227 470	312 822	405 041	505 624
Cash Flow - Investing (used)	(244 428)	(260 451)	(361 794)	(400 032)	(270 858)	(270 858)	(270 858)	(291 536)	(313 123)	(360 952)
Cash Flow - Financing	99 016	(106 067)	45 621	106 737	(133 988)	(133 988)	(133 988)	164 083	201 197	258 025

**IDP Strategic Objectives - Revenue - Chart A14**



	06/07 AUD	07/08 AUD	08/09 AUD	CY 09/10 BUD	CY 09/10 ADJ	CY 09/10 FCST	CY 09/10 ACT	Budget Year 10/11	Budget Year +1 11/12	Budget Year +2 12/13
Cash Flow - Op. Activities	285 766	344 500	401 876	236 004	227 470	227 470	227 470	312 822	405 041	505 624
Cash Flow - Investing (used)	(244 428)	(260 451)	(361 794)	(400 032)	(270 858)	(270 858)	(270 858)	(291 536)	(313 123)	(360 952)
Cash Flow - Financing	99 016	(106 067)	45 621	106 737	(133 988)	(133 988)	(133 988)	164 083	201 197	258 025

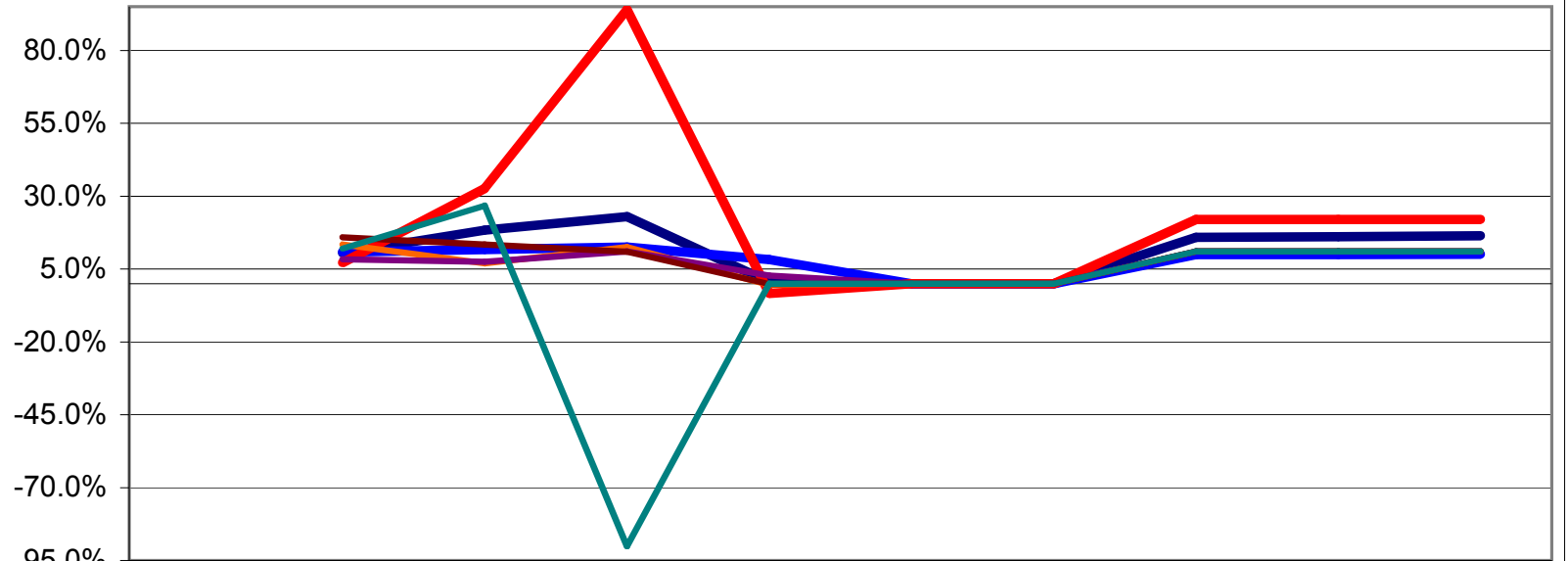
	06/07 AUD	07/08 AUD	08/09 AUD	CY 09/10 BUD	CY 09/10 ADJ	CY 09/10 FCST	CY 09/10 ACT	Budget Year 10/11	Budget Year +1 11/12	Budget Year +2 12/13
--	-----------	-----------	-----------	-----------------	-----------------	------------------	-----------------	----------------------	----------------------------	----------------------------

**Increases in service charges**

% incr total service charges (incl prop rates)	10.5%	18.3%	23.0%	0.5%	0.0%	0.0%	15.8%	16.1%	16.4%
% incr Property Tax	10.8%	11.6%	12.6%	8.2%	0.0%	0.0%	10.0%	10.0%	10.0%
% incr Service charges - electricity revenue	7.2%	32.6%	93.9%	-3.4%	0.0%	0.0%	22.0%	22.0%	22.0%
% incr Service charges - water revenue	13.4%	7.0%	12.5%	-0.5%	0.0%	0.0%	11.0%	11.0%	11.0%
% incr Service charges - sanitation revenue	8.4%	7.5%	11.0%	2.8%	0.0%	0.0%	11.0%	11.0%	11.0%
% incr Service charges - refuse	15.9%	13.4%	10.9%	-0.1%	0.0%	0.0%	11.0%	11.0%	11.0%
% incr in Service charges - other	11.9%	26.7%	-90.1%	0.0%	0.0%	0.0%	11.0%	11.0%	11.0%

**Service charges - Revenue % change - Chart A22**

Rm



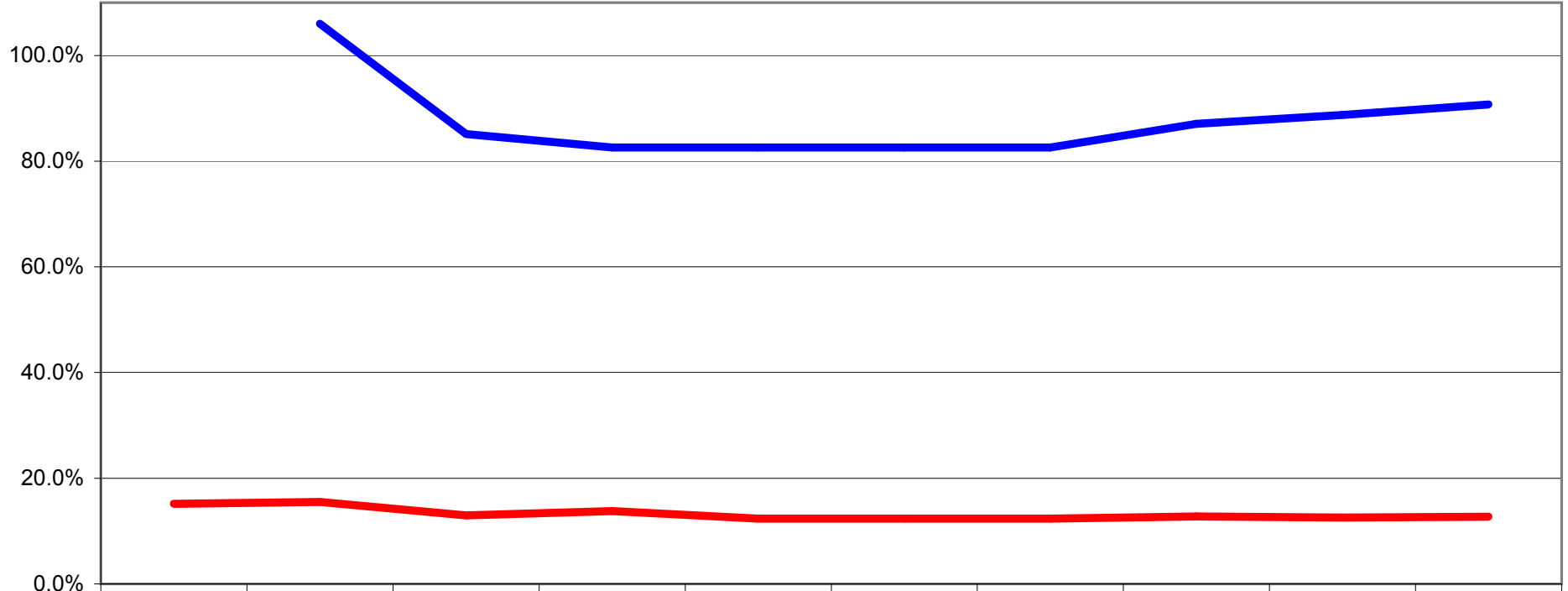
	06/07 AUD	07/08 AUD	08/09 AUD	CY 09/10 BUD	CY 09/10 ADJ	CY 09/10 FCST	CY 09/10 ACT	Budget Year 10/11	Budget Year +1 11/12	Budget Year +2 12/13
■ % incr total service charges (incl prop rates)		10.5%	18.3%	23.0%	0.5%	0.0%	0.0%	15.8%	16.1%	16.4%
■ % incr Property Tax		10.8%	11.6%	12.6%	8.2%	0.0%	0.0%	10.0%	10.0%	10.0%
■ % incr Service charges - electricity revenue		7.2%	32.6%	93.9%	-3.4%	0.0%	0.0%	22.0%	22.0%	22.0%
■ % incr Service charges - water revenue		13.4%	7.0%	12.5%	-0.5%	0.0%	0.0%	11.0%	11.0%	11.0%
■ % incr Service charges - sanitation revenue		8.4%	7.5%	11.0%	2.8%	0.0%	0.0%	11.0%	11.0%	11.0%
■ % incr Service charges - refuse		15.9%	13.4%	10.9%	-0.1%	0.0%	0.0%	11.0%	11.0%	11.0%
■ % incr in Service charges - other		11.9%	26.7%	-90.1%	0.0%	0.0%	0.0%	11.0%	11.0%	11.0%

	06/07 AUD	07/08 AUD	08/09 AUD	CY 09/10 BUD	CY 09/10 ADJ	CY 09/10 FCST	CY 09/10 ACT	Budget Year 10/11	Budget Year +1 11/12	Budget Year +2 12/13
--	-----------	-----------	-----------	-----------------	-----------------	------------------	-----------------	----------------------	----------------------------	----------------------------

**Debt**

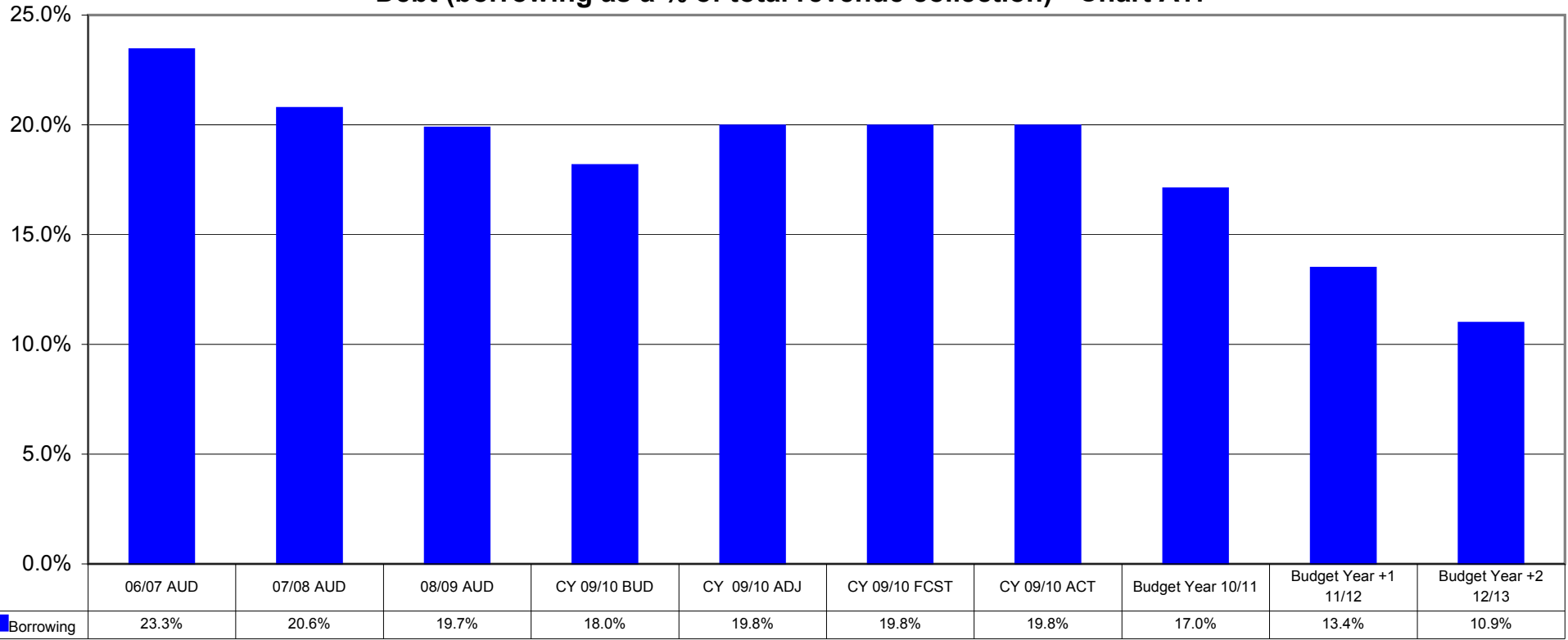
Borrowing	23.3%	20.6%	19.7%	18.0%	19.8%	19.8%	19.8%	17.0%	13.4%	10.9%
Annual Debtors Collection		106.0%	85.1%	82.6%	82.6%	82.6%	82.6%	87.0%	88.7%	90.7%
O/S Debtors to Revenue	15.2%	15.5%	13.0%	13.8%	12.4%	12.4%	12.4%	12.8%	12.5%	12.7%

**Revenue collection - Chart A18**



	06/07 AUD	07/08 AUD	08/09 AUD	CY 09/10 BUD	CY 09/10 ADJ	CY 09/10 FCST	CY 09/10 ACT	Budget Year 10/11	Budget Year +1 11/12	Budget Year +2 12/13
Annual Debtors Collection		106.0%	85.1%	82.6%	82.6%	82.6%	82.6%	87.0%	88.7%	90.7%
O/S Debtors to Revenue	15.2%	15.5%	13.0%	13.8%	12.4%	12.4%	12.4%	12.8%	12.5%	12.7%

**Debt (borrowing as a % of total revenue collection) - Chart A17**



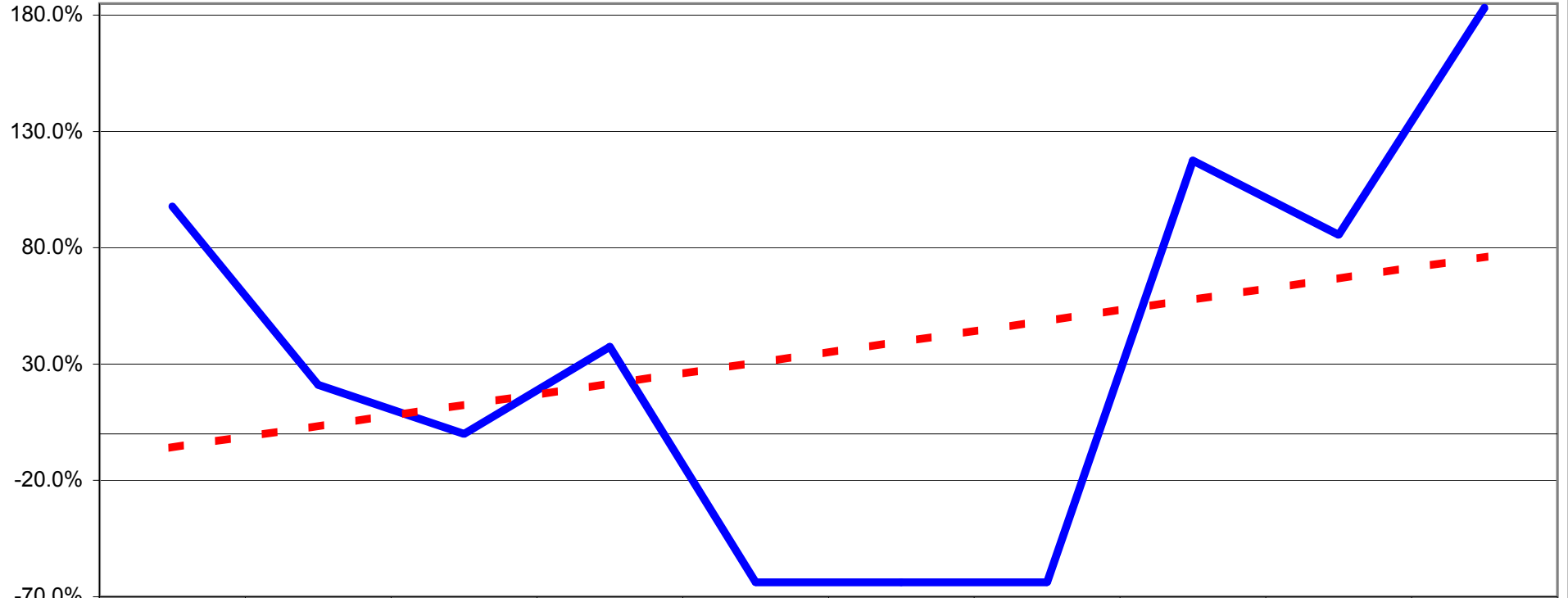


06/07 AUD	07/08 AUD	08/09 AUD	CY 09/10 BUD	CY 09/10 ADJ	CY 09/10 FCST	CY 09/10 ACT	Budget Year 10/11	Budget Year +1 11/12	Budget Year +2 12/13
-----------	-----------	-----------	-----------------	-----------------	------------------	-----------------	----------------------	----------------------------	----------------------------

**Borrowed capex funding**

97.7%	21.1%	0.0%	37.4%	-63.8%	-63.8%	-63.8%	117.5%	85.6%	183.2%
-------	-------	------	-------	--------	--------	--------	--------	-------	--------

**Borrowed capex funding - Chart A20**



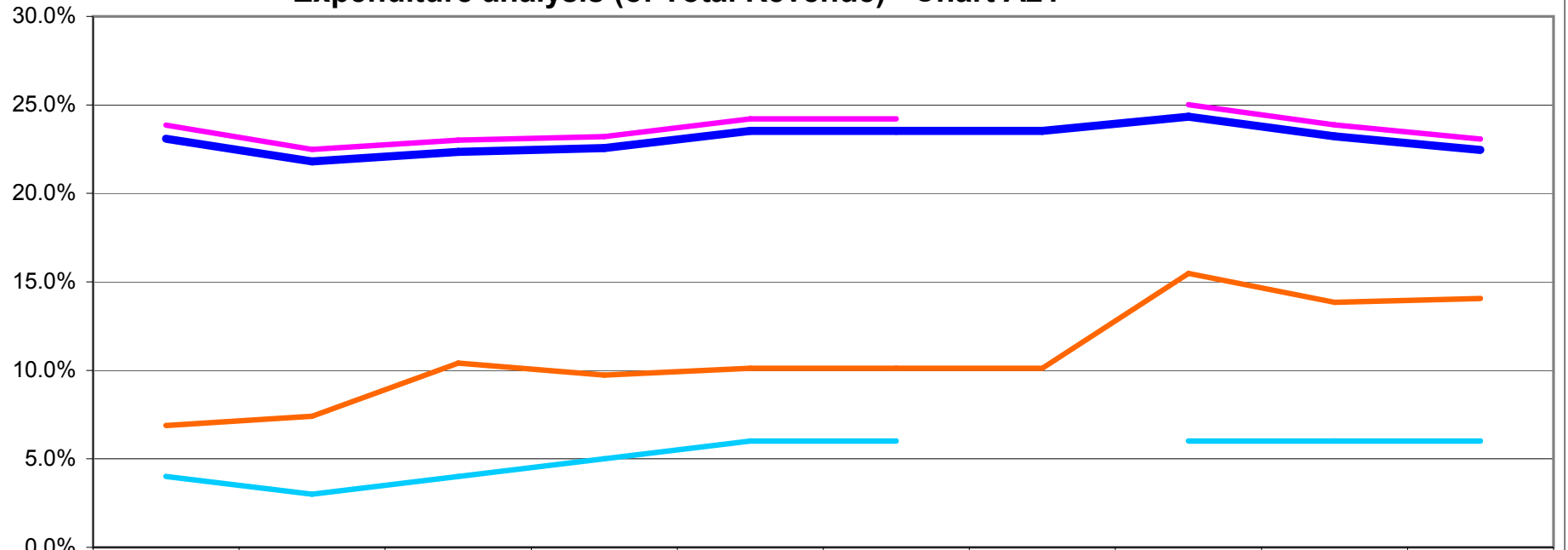
	06/07 AUD	07/08 AUD	08/09 AUD	CY 09/10 BUD	CY 09/10 ADJ	CY 09/10 FCST	CY 09/10 ACT	Budget Year 10/11	Budget Year +1 11/12	Budget Year +2 12/13
<b>Borrowed capex funding</b>	97.7%	21.1%	0.0%	37.4%	-63.8%	-63.8%	-63.8%	117.5%	85.6%	183.2%

06/07 AUD 07/08 AUD 08/09 AUD CY 09/10 BUD CY 09/10 ADJ CY 09/10 FCST CY 09/10 ACT Budget Year 10/11 Budget Year +1 11/12 Budget Year +2 12/13

**Expenditure analysis**

Employee costs	23.1%	21.8%	22.3%	22.6%	23.5%	23.5%	23.5%	24.3%	23.2%	22.5%
Remuneration	23.9%	22.5%	23.0%	23.2%	24.2%	24.2%		25.0%	23.9%	23.1%
Repairs & Maintenance	4.0%	3.0%	4.0%	5.0%	6.0%	6.0%		6.0%	6.0%	6.0%
Finance charges & Depreciation	6.9%	7.4%	10.4%	9.7%	10.1%	10.1%	10.1%	15.5%	13.8%	14.1%

**Expenditure analysis (of Total Revenue) - Chart A21**



	06/07 AUD	07/08 AUD	08/09 AUD	CY 09/10 BUD	CY 09/10 ADJ	CY 09/10 FCST	CY 09/10 ACT	Budget Year 10/11	Budget Year +1 11/12	Budget Year +2 12/13
Employee costs	23.1%	21.8%	22.3%	22.6%	23.5%	23.5%	23.5%	24.3%	23.2%	22.5%
Remuneration	23.9%	22.5%	23.0%	23.2%	24.2%	24.2%		25.0%	23.9%	23.1%
Repairs & Maintenance	4.0%	3.0%	4.0%	5.0%	6.0%	6.0%		6.0%	6.0%	6.0%
Finance charges & Depreciation	6.9%	7.4%	10.4%	9.7%	10.1%	10.1%	10.1%	15.5%	13.8%	14.1%